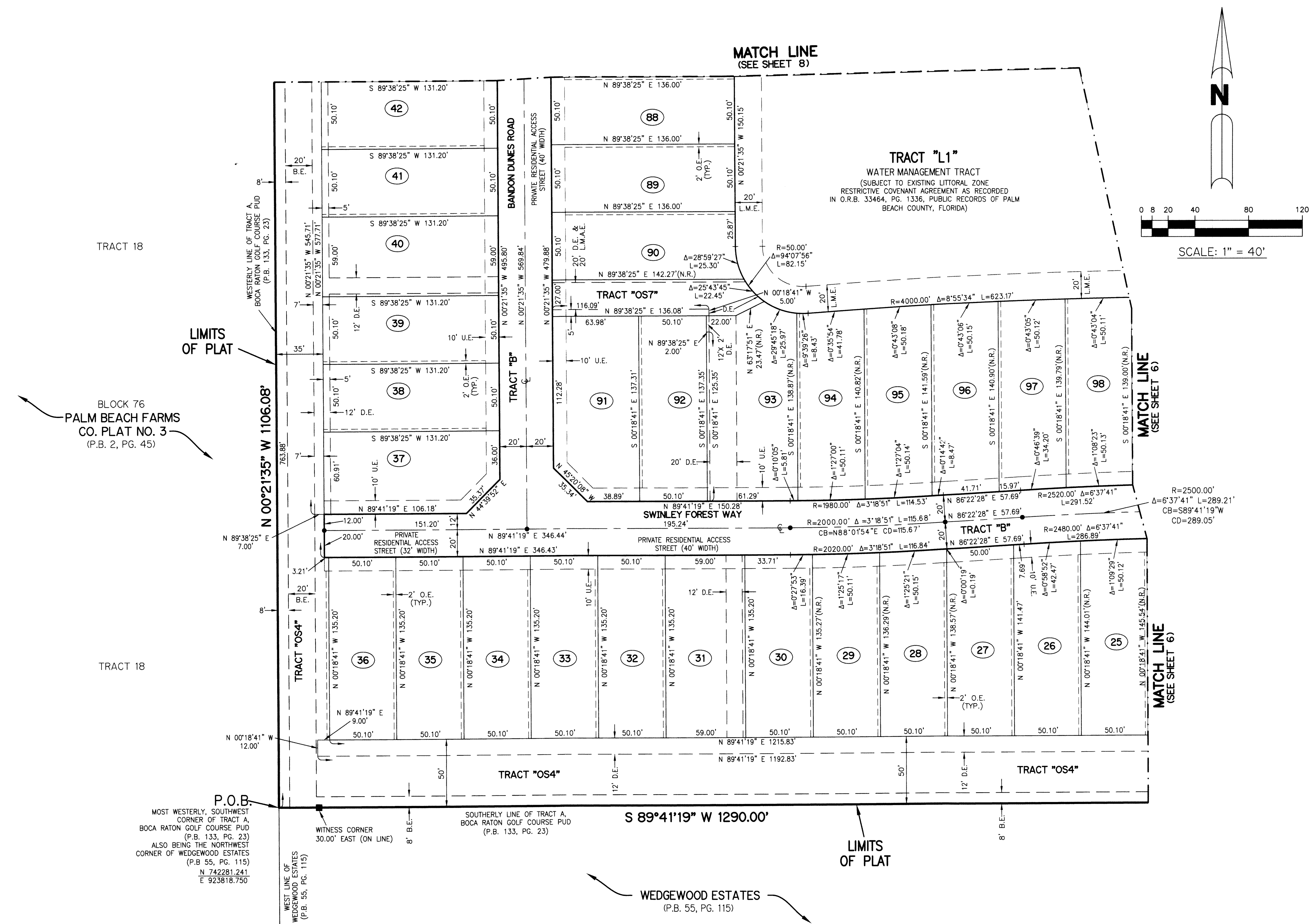


BOCA RATON GOLF COURSE PUD - PLAT ONE

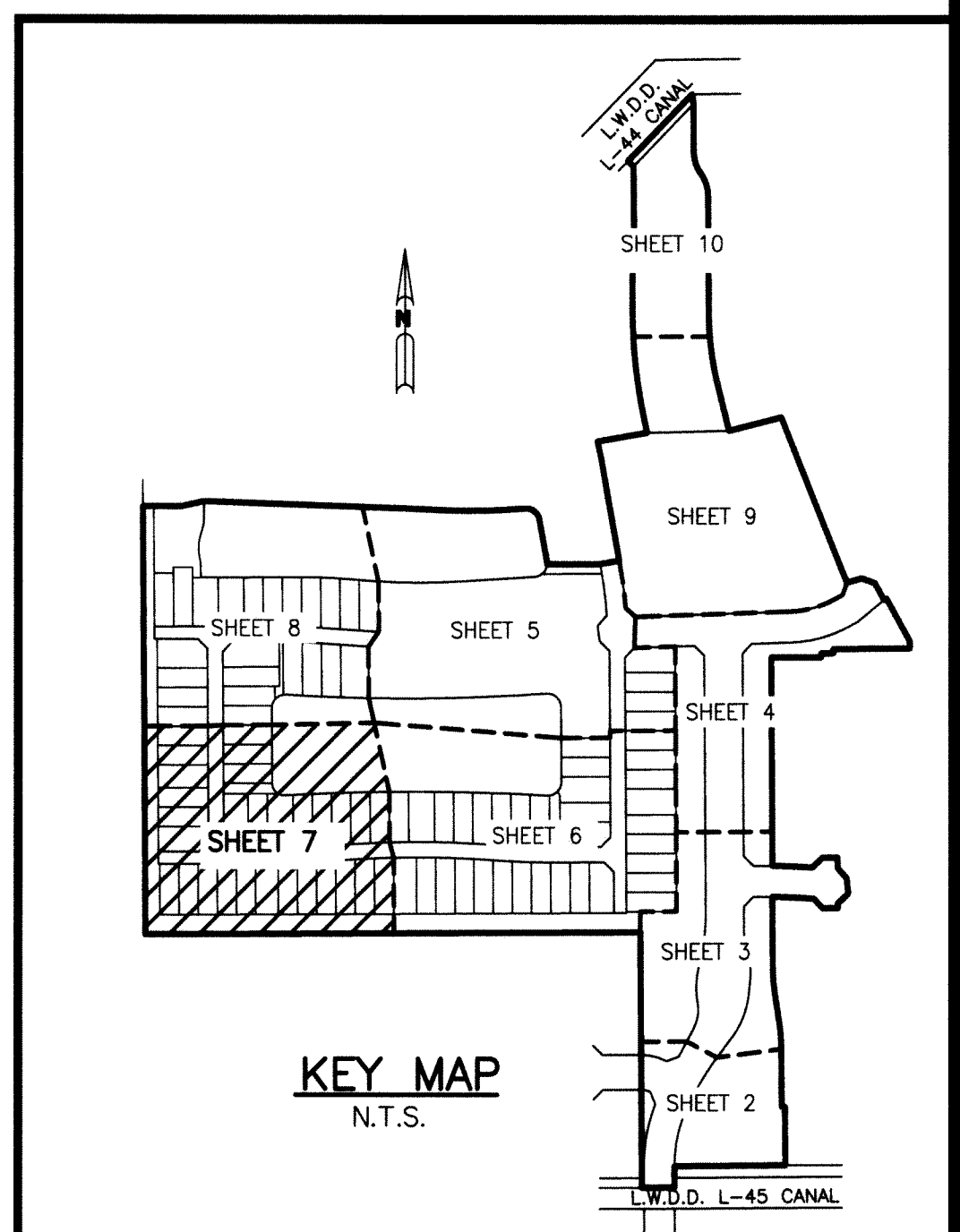
BEING A REPLAT OF A PORTION OF TRACT A, BOCA RATON GOLF COURSE PUD, AS RECORDED
IN PLAT BOOK 133, PAGES 23 THROUGH 28, PUBLIC RECORDS OF PALM BEACH COUNTY, FLORIDA,
LYING WITHIN SECTION 17, TOWNSHIP 47 SOUTH, RANGE 42 EAST, PALM BEACH COUNTY, FLORIDA

SHEET 7 OF 10

183



- LEGEND:**
- SET PERMANENT REFERENCE MONUMENT 4"x4" CONCRETE MONUMENT WITH 1.5" DISK STAMPED L.B. #7741 (UNLESS OTHERWISE NOTED)
 - FOUND PERMANENT REFERENCE MONUMENT 4"x4" CONCRETE MONUMENT WITH 1.5" DISK STAMPED L.B. #7741
 - SET PERMANENT CONTROL POINT NAIL WITH 1.25" DISK STAMPED L.B. #7741
 - FOUND PERMANENT CONTROL POINT NAIL WITH 1.25" DISK STAMPED L.B. #7741
 - S.I.R.C. SET PERMANENT REFERENCE MONUMENT 5/8" IRON ROD WITH 1.3" CAP STAMPED L.B. #7741
 - SN&D SET PERMANENT REFERENCE MONUMENT MAGNETIC NAIL WITH 1.5" DISK STAMPED L.B. #7741
 - AGR AGRICULTURAL
 - Δ DELTA ANGLE
 - △ BUFFER EASEMENT
 - BLK BLOCK
 - CB CHORD BEARING
 - CH CHORD DISTANCE
 - Q CENTERLINE
 - D.B. DEED BOOK
 - D.E. PRIVATE DRAINAGE EASEMENT
 - ESMT EASEMENT
 - F.P.L. FLORIDA POWER & LIGHT
 - L ARC LENGTH
 - L.A.E. LIMITED ACCESS EASEMENT
 - LB LICENSED BUSINESS
 - L.M.A.E. LAKE MAINTENANCE ACCESS EASEMENT
 - L.M.E. LAKE MAINTENANCE EASEMENT
 - L.W.D. LAKE WORTH DRAINAGE DISTRICT
 - N.R. NOT RADIAL
 - N.R.T.R. NOT RADIAL TO REAR LINE
 - N.T. NON-TANGENT
 - N.T.S. NOT TO SCALE
 - O.R.B. OFFICIAL RECORD BOOK
 - O.E. MAINTENANCE & ROOF OVERHANG EASEMENT
 - P.B.C.O. PALM BEACH COUNTY
 - P.B.C.U.E. PALM BEACH COUNTY UTILITY EASEMENT
 - P.B. PLAT BOOK
 - P.C. POINT OF CURVATURE
 - P.C.C. POINT OF COMPOUND CURVATURE
 - P.C.P. PERMANENT CONTROL POINT
 - P.D.E. PUBLIC DRAINAGE EASEMENT
 - PG. PAGE
 - POS. PAGES
 - P.O.B. POINT OF BEGINNING
 - P.N.R.I. POINT OF NON-RADIAL INTERSECTION
 - P.N.T.I. POINT OF NON-TANGENT INTERSECTION
 - P.O.C. POINT OF COMMENCEMENT
 - P.O.I. POINT OF INTERSECTION
 - P.R.C. POINT OF REVERSE CURVATURE
 - P.R.I. POINT OF RADIAL INTERSECTION
 - P.S.M. PROFESSIONAL SURVEYOR AND MAPPER
 - P.T. POINT OF TANGENCY
 - PUD PLANNED UNIT DEVELOPMENT
 - R RADIUS
 - RAD RADIAL
 - R/W RIGHT-OF-WAY
 - R.D. & D. ROAD, DYKE AND DITCH RESERVATION
 - SIRC SET 5/8" IRON ROD & CAP STAMPED "PRM LB7741"
 - SN&D SET MAGNETIC NAIL & DISK STAMPED "PRM LB7741"
 - S.T. SURVEY TIE
 - TY. TYPICAL
 - U.E. UTILITY EASEMENT
- N=780000.00
E=930000.00 STATE PLANE COORDINATE VALUE



THIS INSTRUMENT WAS PREPARED BY
PERRY C. WHITE, P.S.M. 4213, STATE OF FLORIDA
SAND & HILLS SURVEYING, INC.
8461 LAKE WORTH ROAD, SUITE 410
LAKE WORTH, FLORIDA 33467
LB-7741

NOTES:
COORDINATES SHOWN ARE GRID COORDINATES DATUM = NAD 83 (1990 ADJUSTMENT)
ZONE = FLORIDA EAST ZONE
LINEAR UNIT = U.S. SURVEY FEET
COORDINATE SYSTEM = 1983 STATE PLANE TRANSVERSE MERCATOR PROJECTION
ALL DISTANCES ARE GROUND (UNLESS OTHERWISE NOTED)
SCALE FACTOR = 1.00002408
PLAT BEARING = GRID BEARING
GROUND DISTANCE X SCALE FACTOR = GRID DISTANCE